



Kansas KIDS COUNT provides an annual snapshot of how Kansas children are doing statewide, and how they compare on a county-by-county basis. For more Kansas data, visit kac.org/kidscount. To see how Kansas kids compare on a national level, visit datacenter.kidscount.org.

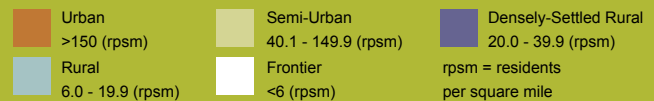
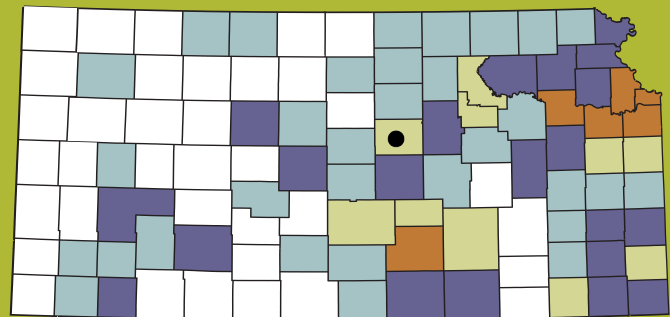
The KIDS COUNT partner in Saline County is:

Salina Area United Way
 P.O. Box 355
 128 N. Santa Fe, Suite 3A
 Salina, KS 67401
 (785) 827-1312
www.unitedwaysalina.org



COUNTY PEER GROUPS

Saline is defined as Semi-Urban



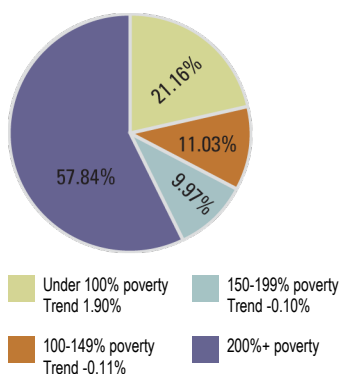
DEMOGRAPHICS

	SALINE	PEERS	KANSAS
Median Household Income	\$45,225	\$47,170	\$50,140
Population of County (all ages)	55,740	465,397	2,893,957
Population of County (under 18)	24.41%	23.86%	25.02%
White	69.35%	75.65%	67.45%
Hispanic	18.09%	12.00%	17.73%
African-American	3.40%	4.63%	6.50%
Two or more races	6.24%	5.25%	4.89%
American Indian or Alaskan Native	0.50%	0.87%	0.81%
Asian, Native Hawaiian & other Pacific Islander	2.42%	1.60%	2.63%

STATE-LEVEL DATA

POVERTY

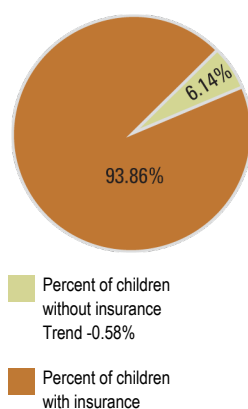
Poverty status of Kansas children under 19.



Current Rate 2013 | Trend 2009-2013

INSURANCE COVERAGE

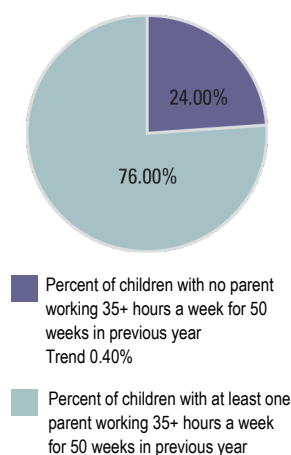
Health insurance status of Kansas children under 18.



Current Rate 2013 | Trend 2009-2013

PARENTS' EMPLOYMENT

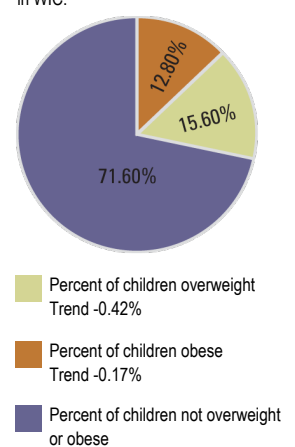
Employment status of Kansas parents with children under 18.



Current Rate 2012 | Trend 2008-2012

CHILDHOOD OVERWEIGHT AND OBESITY

Children ages 2 to 4 participating in WIC.



Current Rate 2011 | Trend 2008-2011

The difference between state-level poverty and insurance rates depicted in the pie graphs above and county-level rates indicated on next page is due to the data year and source. To compare a county's poverty and insurance rates with that of its peer counties, use the poverty and insurance rows in the Economic and Health Indicators sections on the next page. If referencing only the state's rates, use the more recent state-level data available in these pie graphs.

Kansas KIDS COUNT is produced by Kansas Action for Children (KAC) and funded, in part, by the Annie E. Casey Foundation. The findings and conclusions presented are those of KAC and do not necessarily reflect the opinions of the Foundation. Data collection and analysis were provided by the Kansas Health Institute. Kansas Action for Children is a nonprofit, nonpartisan organization dedicated to shaping policy that improves the lives of Kansas children and families.

Kansas Action for Children | 720 SW Jackson, Suite 201 | Topeka, Kansas 66603 | www.kac.org

Current Rate

Rate per 100, unless otherwise noted, for the most recent year data available

Trend Rate

Average change per year during the most recent five years data available

HEALTH INDICATORS	SALINE	PEERS	KANSAS	SALINE	PEERS	KANSAS
IMMUNIZATIONS Percent of kindergarteners fully immunized of the 4:3:1:3:3 series by age 2. Current data from 2012-13 school year.	61.00%	58.04%	61.40%	-1.50%	-1.93%	-0.15%
PRENATAL CARE Percent of live births to mothers who received adequate or adequate-plus prenatal care. Current data from 2012.	81.03%	81.05%	81.89%	0.01%	0.87%	1.15%
LOW BIRTH WEIGHT BABIES Percent of live births weighing under 5.5 lbs. Current data from 2012.	8.49%	6.62%	7.17%	0.00%	-0.06%	-0.02%
INFANT MORTALITY Number of deaths, under age 1, per 1,000 live births. Current rate from 2013.	9.07	7.64	6.39	0.30	-0.01	-0.12
TEEN VIOLENT DEATHS Number per 100,000 of 15- to 19-year-olds who died due to suicide, homicide or motor vehicle accident. Current data from 2012.	51.79	34.80	39.32	10.36	1.90	-0.50
YOUTH TOBACCO USE Percent of 6th, 8th, 10th and 12th graders who reported using cigarettes or smokeless tobacco in the last 30 days. Current data from 2013-14 school year.	10.00%	8.97%	8.45%	-1.15%	-1.06%	-1.13%
YOUTH BINGE DRINKING Percent of 6th, 8th, 10th and 12th graders who reported having 5+ consecutive drinks on at least one occasion in the past two weeks. Current data from 2013-14 school year.	10.93%	8.85%	9.76%	-1.39%	-0.99%	-1.02%
UNINSURED CHILDREN Percent of children under 19 with no health insurance coverage. Current data from 2012.	7.38%	6.96%	7.07%	-0.29%	-0.32%	-0.30%
MENTAL HEALTH Number per 1,000 children under 18 hospitalized for mental health. Current data from 2013.	1.84	2.84	2.61	-0.04	-0.14	-0.19
MEDICAID ENROLLMENT (Not depicted as rate) Average monthly enrollment of children under 19 in Medicaid. Current data from 2013.	4,876	32,646	220,300	272	1,665	12,171
CHIP ENROLLMENT (Not depicted as rate) Average monthly enrollment of children under 19 in the Children's Health Insurance Program. Current data from 2013.	1,258	8,368	54,806	105	603	3,604

EDUCATION INDICATORS	SALINE	PEERS	KANSAS	SALINE	PEERS	KANSAS
EARLY HEAD START Number of Early Head Start slots available per 100 children (0-3 years of age) below 100% of poverty. Current data from 2013.	26.78	8.09	7.25	-0.46	-0.75	0.09
HEAD START Number of Head Start slots available per 100 children (3-4 years of age) below 100% of poverty. Current data from 2013.	69.56	52.68	39.78	-3.04	-3.41	-1.99
PRE-KINDERGARTEN Percent of elementary schools that offer Pre-Kindergarten or Four-Year-Old At-Risk program. Current data from 2013-14 school year.	0.00%	37.84%	50.38%	-0.91%	0.61%	1.15%
FULL-DAY KINDERGARTEN Percent of elementary schools that offer full-day and every day kindergarten. Current data from 2013-14 school year.	20.00%	83.78%	86.65%	3.00%	0.96%	1.43%
READING PROFICIENCY Percent of 5th graders meeting standards, exceeding standards or scoring exemplary on reading assessments. Current data from 2012-13 school year.	79.61%	87.20%	84.91%	-0.99%	-0.22%	0.20%
HIGH SCHOOL GRADUATION Percent of 9th grade public school students enrolled in the 2009-10 school year who graduated in 2013. Current data from 2012-13 school year.	88.31%	86.65%	85.83%	0.68%	-0.49%	-0.35%
CHILD CARE SUBSIDIES (Not depicted as rate) Average monthly number of children participating in the Kansas Child Care Assistance program. Current data from 2013.	469	2,294	16,328	-10	-179	-1,191

ECONOMIC INDICATORS	SALINE	PEERS	KANSAS	SALINE	PEERS	KANSAS
POVERTY Percent of children under 18 living below 100% poverty. Current data from 2012.	21.67%	19.78%	19.00%	1.35%	1.13%	1.06%
FREE AND REDUCED LUNCH Percent of public school children participating in the free and reduced price lunch program. Current data from 2013-14 school year.	57.35%	53.11%	50.03%	1.22%	1.63%	1.07%
MATERNAL EDUCATION Percent of live births to mothers without a high school diploma. Current data from 2012.	17.49%	10.73%	14.59%	-1.80%	-1.20%	-0.96%
SNAP BENEFITS (Not depicted as rate) Average monthly enrollment of children in the Kansas Food Assistance Program. Current data from 2013.	3,173	22,073	141,761	236	1,542	10,295
TANF BENEFITS (Not depicted as rate) Average monthly enrollment of children in the Kansas Temporary Assistance for Families Program. Current data from 2013.	260	2,005	15,419	-31	-245	-1,570